



Production Ready Graphic File Requirements

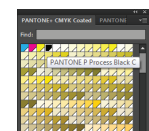
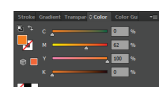
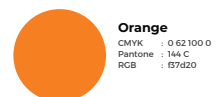
● Acceptable File Formats

- High Resolution PDF (Preferred)
- Adobe Illustrator (CS6 or lower)
- Corel Draw (version 17 or lower)
- Adobe Photoshop or Adobe InDesign.
- Images should be embedded in your file when sending to us. Art fees will be charged if design work is needed to meet guidelines.



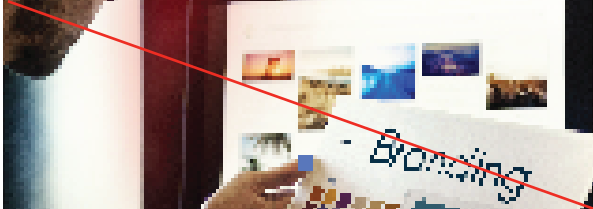
● Color/ Layout

- Please provide a PDF layout or hard copy proof of the files being printed.
- If a specific color needs to be matched, please provide the Pantone color coated reference# to be called out. Due to CMYK conversion process of printers, all colors will be matched as close as possible.



● Image Quality/ Resolution

- All images embedded - we need a 150 - 200 minimum dpi (dots per inch) @ 100% final output size. Images should be at a minimum of 300 dpi at 50% scale.
- If an application does not allow full size, you can build at ¼ output size with 300-400 dpi or ½ output size with 150-200 dpi.
 - Example: When building a 24"x36" graphic, build your file at 6"x9" at 300 dpi.
- Please do not save with crop marks or extra document info
- Send individually saved pdf files according to their assigned layout number and measuring specs.



Pixilated



300 dpi (high res)

● Typography

AaBbCc

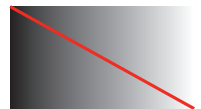
DdEeFf

0123456!@#%&

Make sure all fonts are converted to outlines or provide TTF (True Type Face) before sending files.

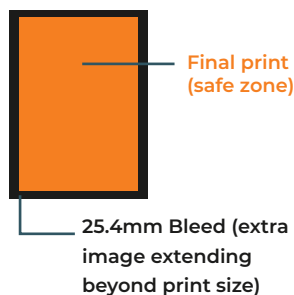
● Vinyl Cut Graphics

- All of the artwork (logos or short lines) must be set up as vector files. No gradients are accepted for vinyl output.
- Vinyl is only available in a limited array of colors, so we will do our best for matching vinyl to your specified Pantone shades.



● Bleeds

- Include a 1" or 25.4 mm bleed at 100% scale, or 0.5" (12.7 mm) bleed at 50% scale to the visual size of the template, for both fabric and Vinyl Graphics.



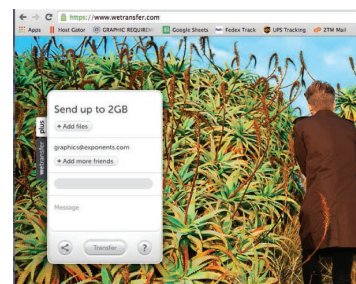
● File Names

- Each file should be named after the corresponding panel in the layout. There should be a separate file for each numbered panel in the graphic layout.

#1	1/7/2020 12:40 PM
#1.pdf	1/7/2020 12:40 PM
#2	1/7/2020 12:48 PM
#2.pdf	1/7/2020 12:50 PM
#3	1/7/2020 2:08 PM
#3.pdf	1/7/2020 2:09 PM
#4	1/7/2020 1:59 PM
#4.pdf	1/7/2020 2:00 PM
#5	1/7/2020 2:09 PM
#5.pdf	1/7/2020 2:10 PM

● File Share

- You can share your file via **Wetransfer** or **Googledrive** with our Graphics Department graphics@exponents.com



● Production Timelines

a. Exponents requires 20 WORKING DAYS to complete production on orders. This means that we need final artwork at least 20 business days before the project ships. Failure to submit art on-time or any errors in files regarding images, fonts, sizing, file types, resolution, etc., which require change to final artwork after the 20-day mark could result in rush fees (30% of total graphic cost).

Sunday	Monday	Tuesday	Wednesday	Thursday	Friday	Saturday
1	2 ARTWORK SENT TO EXPONENTS	3 START	4 LAYOUT PROOF	5	6 LAYOUT APPROVAL	7
8	9	10	11	12	13	14
15	16	17	18	19	20	21
22	23	24 GRAPHICS PRETEST	25	26	27 ORDER SHIPS	28

- After this day extra Charges may apply.
- We will send you a layout proof showing the graphics that will be printed.
- Standard Production.
- We provided 2 working days to have the layout proof approval, or to request changes.
- We make a pretest of the graphics to ensure everything looks and fits perfectly.

● File Specifications

a. We will provide a 3D layout with individually numbered graphic items along with graphic templates for each. It is imperative that all artwork follows the specifications detailed in each template. To streamline the graphics process, please submit one file for each item, and title it according to the item number.

Graphics must be created to the VISUAL SIZE shown on the layout template, plus a 1" bleed.

